



82T-ES16-TB25

Features

- Predestined for public surroundings (vandalism risk), industrial extreme surroundings
- Carbon contact technology
- High operating comfort thanks to our specially developed long-stroke keys
- Keycaps and front panel made of stainless steel
- Almost resistant to the effects of violence
- Key symbols are done by laser etching
- Any country variant is possible
- Any customer-specific adaptations can be implemented on request
- With integrated trackball (0,98 inch)

Mechanical Data

- Dimensions of 395 x 130 x 42 mm
- 0,13 inch travel keys with tactile feel
- Operation force 0,65 N
- 82 keys in compact layout
- Ergonomic 0,51 inch keycaps
- Durability > 10 million ops.
- Storage temperature -40°F - +176°F
- Operation temperature -22°F - +140°F
- Protection IP65, IK09

Electrical Data

- Connection options: USB 2.0
- Power supply + 5 V/DC, 50 mA
- CE Compliant
- RoHS/Reach Compliant

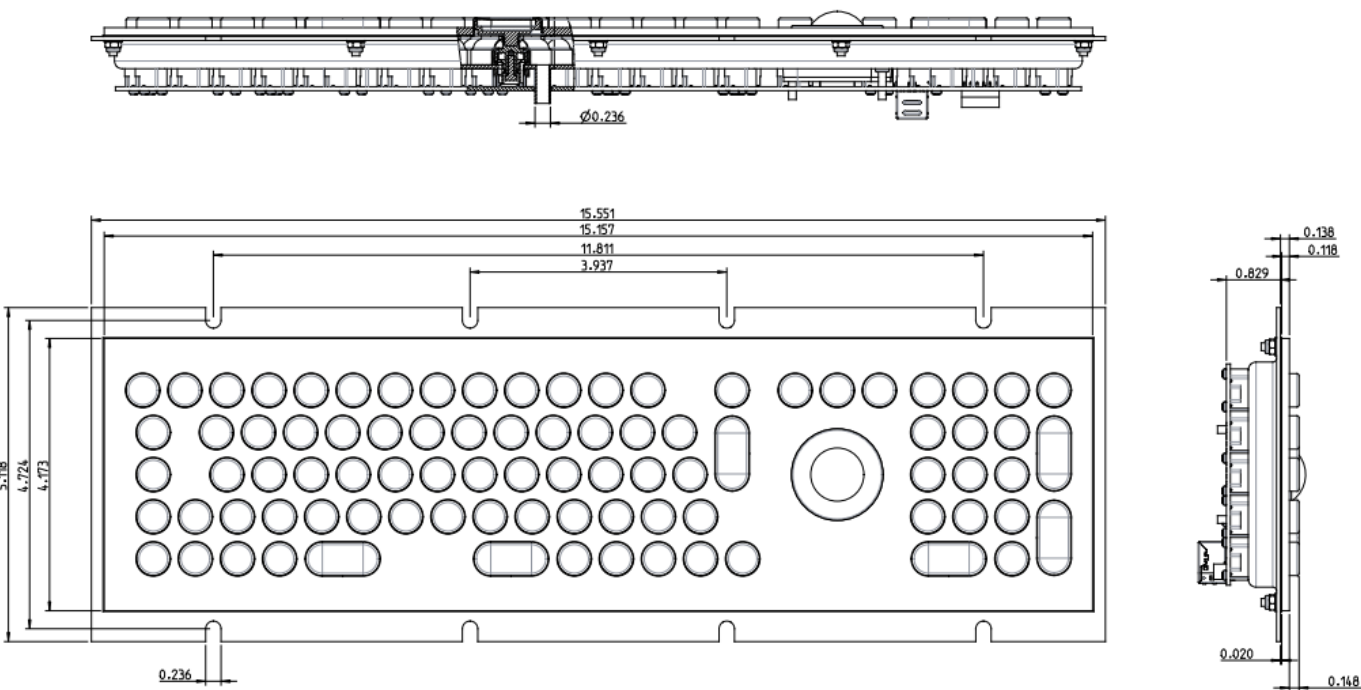


Tel.: +1 (888)-459-6081

control touch trust

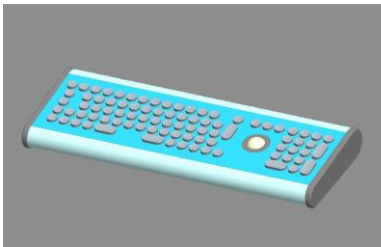
www.pdshmi.com

Drawing

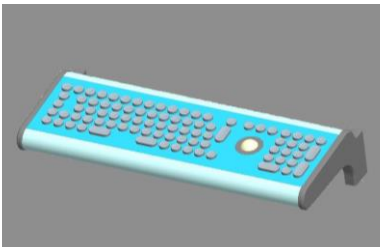


Variants

We offer this keyboard in different variants. Are you interested in any of the following solutions?
Just get in touch with us.



82T-ES16-TB25 TGEH



82T-ES16-TB25 WGEH



62T-ES16-TB



Tel.: +1 (888)-459-6081

control touch trust

www.pdshmi.com