



62T-ES16

Features

- Predestined for public surroundings (vandalism risk), industrial extreme surroundings
- Carbon contact technology
- High operating comfort thanks to our specially developed long-stroke keys
- Keycaps and front panel made of stainless steel
- Almost resistant to the effects of violence
- Key symbols are done by laser etching
- Any country variant is possible
- Any customer-specific adaptations can be implemented on request
- Also available with integrated trackball, touchpad or in different housings

Mechanical Data

- Dimensions of 9,45 x 4,53 x 0,87 inch
- 0,13 mm travel keys with tactile feel
- Operation force 0,65 N
- 62 keys in compact layout
- Ergonomic 0,51 inch keycaps
- Durability > 10 million ops.
- Storage temperature -40°F - +176°F
- Operation temperature -22°F - +140°F
- Protection IP65, IK09

Electrical Data

- Connection options: USB 2.0
- Power supply + 5 V/DC, 50 mA
- CE Compliant
- RoHS/Reach Compliant



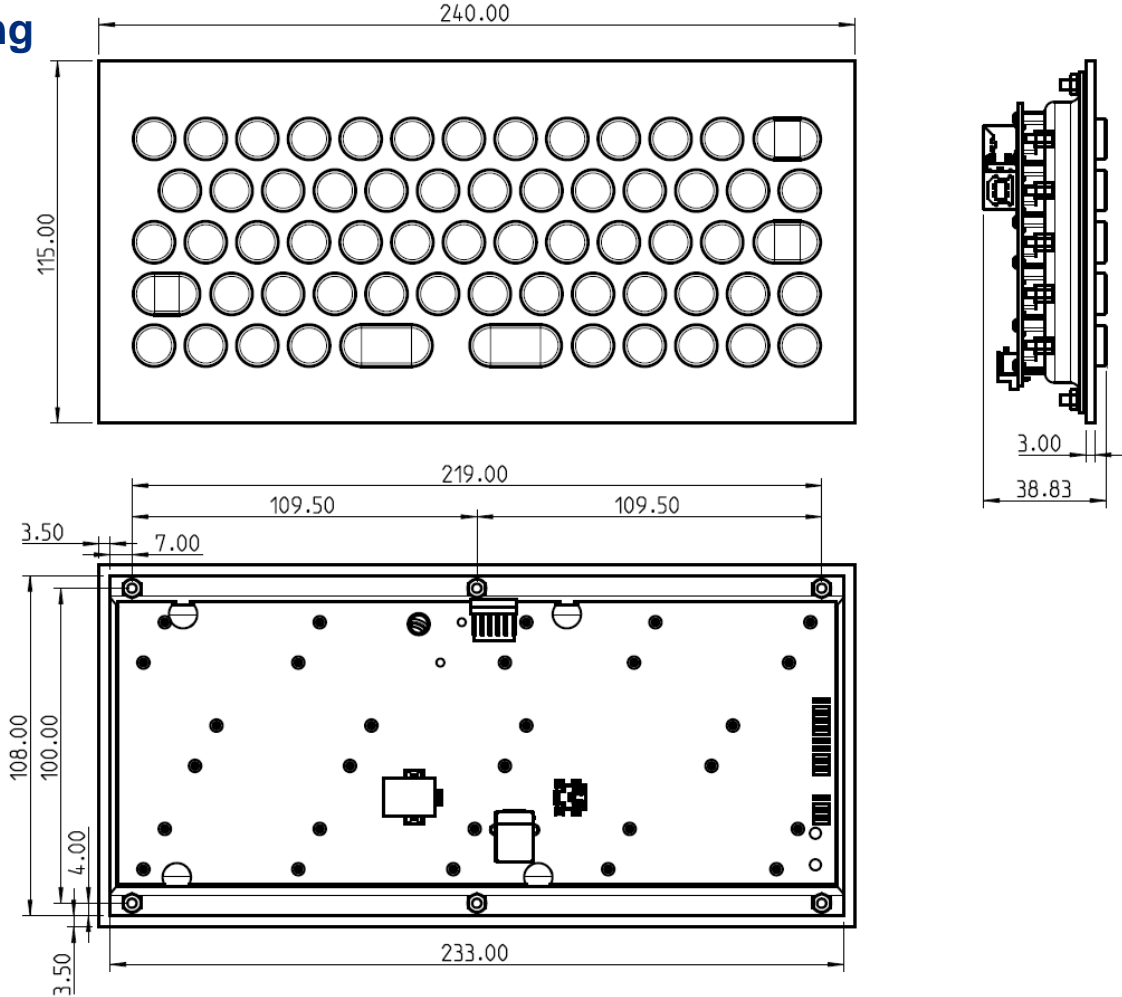
Tel.: +1 (888)-459-6081

control touch trust

www.pdshmi.com

PDS HMI Solutions Corp. 2125 Center Ave, Fort Lee, NJ 07024, USA

Drawing

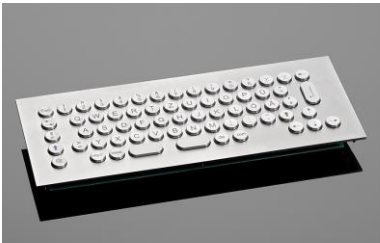


Variants

We offer this keyboard in different variants. Are you interested in any of the following solutions?
Just get in touch with us.



62T-ES16-TB



65T-ES

Also available ...

with Touch Pad

w/o Front Panel

Wall Mount Version

Table Mount Version



control touch trust

Tel.: +1 (888)-459-6081

www.pdshmi.com

PDS HMI Solutions Corp. 2125 Center Ave, Fort Lee, NJ 07024, USA